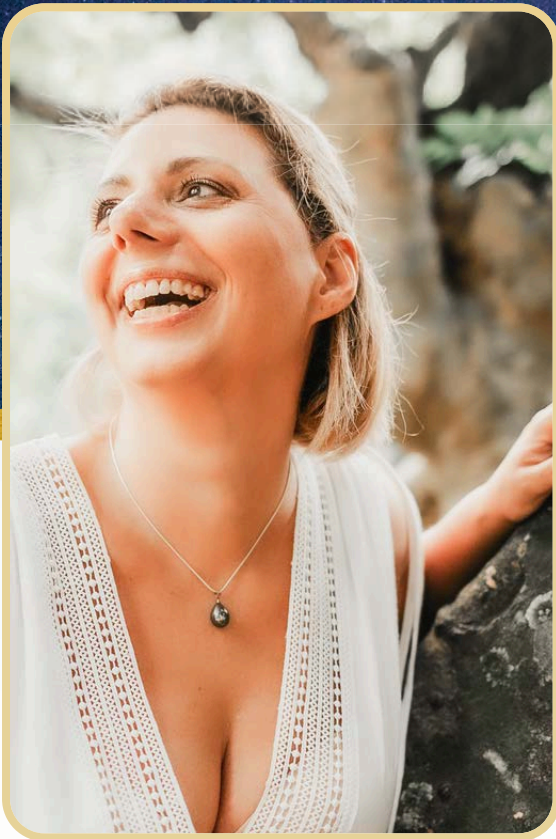




FROM HYPNOTHERAPIST TO EMBODIED LEADER

THE SILENT SHIFT



BY EMILIE VEYRE



I'M EMILIE

“Sometimes, what wants to grow next doesn't arrive with noise or urgency. It comes gently. Like a quiet idea. Like a soft inner knowing. It's a frequency that begins to hum within you — steady, subtle, undeniable.”

Welcome!

You might be in a beautiful phase of your work — grounded, fulfilled, in rhythm with your purpose. Everything flows. You feel aligned.

And still... what if something more was quietly preparing to reveal itself?

Or maybe you've been sensing that something's shifting —not dramatically, but undeniably. A subtle friction. A new question.

Not because things are broken — but because something in you is growing faster than your current frame.

Perhaps you've been thinking about change for a while now —a quiet longing, or a creative unrest. Not loud. Just... persistent.

Like a part of you knows there's a deeper layer waiting to be lived.

Or maybe it's less clear.

Maybe it shows up as a sense of absence — something you can't quite name, but feel, again and again, in the spaces between your sessions, your thoughts, your desires.

Not pain. But a gap. A pull. A sense that something is missing, just out of reach.

And if none of this resonates right now — that's perfect too.

This isn't just a guide. It's an invitation to remember that your evolution is still unfolding, because something more of you is ready to be lived.

Emilie Veyre



TABLE OF CONTENTS

1. YOU'RE NOT JUST A PRACTITIONER ANYMORE
2. THE THREE EVOLUTION CIRCLES OF THE 360° PRACTITIONER
3. WHEN MASTERY CREATES A VOID
4. STEPPING INTO EXPANSION: WHAT ELSE IS POSSIBLE FOR YOU NOW?
5. MASTERING THE EDGE: WHERE COMPETENCE MEETS PRESENCE
6. THE QUIET POWER OF BECOMING
- 7.
- 8.





01

YOU'RE NOT JUST A PRACTITIONER ANYMORE

You've completed your training.

You've started practicing — maybe months ago, maybe years.

Maybe you've been in this work for a few months, maybe for years.

You've applied tools, built trust, refined your presence.

You've made your way through wins, doubts, progress, plateaus.

And in all of that... you've changed. You're still here. And you're no longer the same.

This work isn't something you apply. It moves through you. It changes you. Because this profession doesn't just ask what you know — it calls on who you are.

And the more you practice, the more it shapes you.

Your voice. Your rhythm. Your way of being.

So it's natural that, at some point, what you do starts to stretch beyond how you were trained.

You don't need to call it a shift.

But if you feel something — a subtle expansion, a deeper breath, a quieter clarity, or maybe a lack— you are exactly at the right place.

You're not leaving anything behind.

You're just meeting the part of you that's already becoming more.

A LIVING PROFESSION

This profession doesn't stand still.

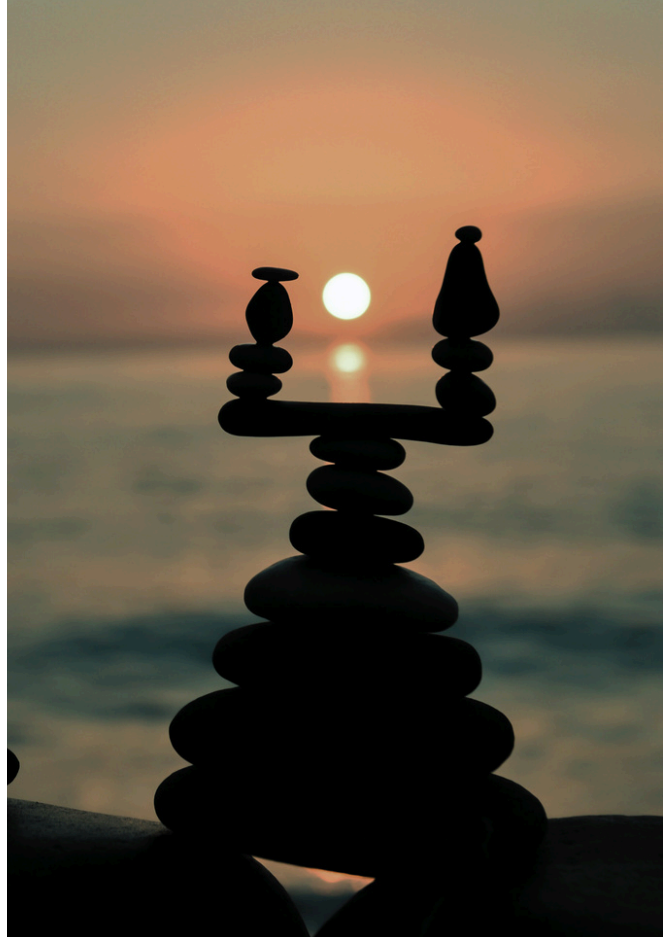
It evolves with every client, every question, every shift in the world.

Being a practitioner today means **wearing many layers** — technician, space-holder, communicator, growing human, business owner, visionary, life learner...

Whether you use scripts, follow a protocol or follow the person.

You have to meet people where they are — in grief, in resistance, in breakthrough, with all their complexities.

And each session may stretch you — not just professionally, but existentially.



THE PRACTICE MUST NO LONGER BE DEFINED BY TECHNIQUE ALONE.

It's about :

- How you embody your tools.
- How you hold ambiguity.
- How you stay present without needing to fix.
- How you carry your ethics, your intuition, your presence — even when things get messy.

Clients today are informed, sensitive, and ask for more. They want shifts, transformation, safety and inspiration.

Holding space requires more than methods. It requires you — your tone, your rhythm, your calibration.

You may have started with what you were taught. But what you're actually doing now... is completely something else .

Something less visible, but more alive.

Something that doesn't always come from what you were taught — but from who you've become.

At some point you must have embodied techniques and be able to juggle with all of them to fully adapt your clients'needs. To be in the idea that you are always evolving, always discovering something new, always being curious about your proper boundaries .

All pointing toward the same vision: **contributing more, more meaningfully** — and creating an energetic balance where you receive as much as you give.

DIFFERENT PATHS, SAME PULSE

No matter how many years you've been practicing —you're not where you were when you started.

But where are you, now?

This isn't about naming a stage or reaching a milestone. It's about taking a moment to observe what's real — in your practice, and in you.

The questions below aren't meant to be answered quickly.

Let them land. Let them stretch something honest.

What feels most “you” in your work right now?

What have you outgrown — and haven't admitted yet?

Where do you feel friction between who you are and how you practice?

What do you no longer feel the need to prove? or still need to prove and to who ?

What would change in your practice if it reflected who you are now — not who you were trained to be?

Where are you holding back? (if it's the case)

Where is your creativity asking for space?



YOU ARE NO LONGER JUST A PRACTITIONER

You're not just practicing anymore. You're becoming the practice. Here are some signs that you might already be stepping into something larger — quietly, naturally, without needing to force it:



YOU ARE OUT OF THE SCRIPT FRAME OR STEP-BY-STEP PROTOCOLS

You have embodied the tools box and know how to see the bigger picture, while navigating between the techniques and protocols to really adapt to your clients's needs.



YOUR BRAIN IS LINK A MINDMAP THAT PROCESS CLIENT NEEDS, BEYOND THEIR WORDS

Your brain no longer works linearly. You simultaneously connect verbal cues, body language, emotional undercurrents, and context. This integrated mental map lets you respond with sharp, adaptive precision. Your observations combine technical knowledge and refined perceptiveness, allowing you to guide the process with accuracy.



YOU HANDLE COMPLEXITY LIKE A SKILLED CONDUCTOR

When multiple dynamics arise — emotional tension, cognitive blocks, energetic shifts — you don't freeze or over-control.

You orchestrate the flow, holding steady even when the process becomes layered or unpredictable.



YOUR CLIENTS RECOGNIZE YOUR UNIQUE ATMOSPHERE

It's no longer just about the tools you use.

Clients comment on the distinct feel of working with you — the environment, the clarity, the presence you bring that shapes the space in a way no protocol alone can.



YOUR PERSONAL EVOLUTION FLOWS DIRECTLY INTO YOUR WORK — WITH CONSCIOUS REFINEMENT

As you study, reflect, and expand, your sessions gain new depth and nuance.

You actively seek supervision, peer dialogue, or expert input because mastery includes knowing when to sharpen, when to check perspective, and when to enrich through collective wisdom.



02

THE 3 EVOLUTION CIRCLES OF THE 360° PRACTITIONER

You are always evolving, the same way as your business and practice evolves with you.

Your work, your presence, your vision continue to deepen, opening new dimensions over time.

This evolution can be sensed through three circles , three distinct yet connected spaces of growth.

These circles help illuminate how you shape your craft, your impact, and your trajectory:

the mastery of your tools,
the emergence of your unique signature,
the expansion into transmission and leadership.

The path from one to another shouldn't be forced or chased.

Here I invite you to simply recognize:

Where are you standing today?

Where are you deepening naturally?

And what new layer might already be forming at the edge of your practice?

I. THE SKILLED PRACTITIONER – SOLID GROUND

You've built something real.

You're not guessing anymore — you know what works.

The tools are there, embodied. The clients arrive, and the work flows.

You've crossed that first, crucial threshold: from theory to mastery.

But let's clarify what this really means:

- **Mastery doesn't mean perfection.**

It means knowing how to stand on solid ground, even when the terrain moves.

It means knowing your tools deeply enough to adapt them in the moment.

It means having earned trust from your clients, your peers, and yourself.

- **You hold a stable professional rhythm.**

Your sessions follow a reliable flow. Your reputation is established.

There's a baseline confidence: you know you can deliver.

This isn't just about filling your calendar — it's about the quiet satisfaction of knowing you're skilled, consistent, and aligned.

- **You know when to hold, when to push, when to listen.**

You're not mechanically applying scripts. You're making decisions on the fly — with nuance, precision, and presence.

- **You recognize the limits of this phase.**

Not because it's wrong or incomplete, but because mastery can become its own plateau.

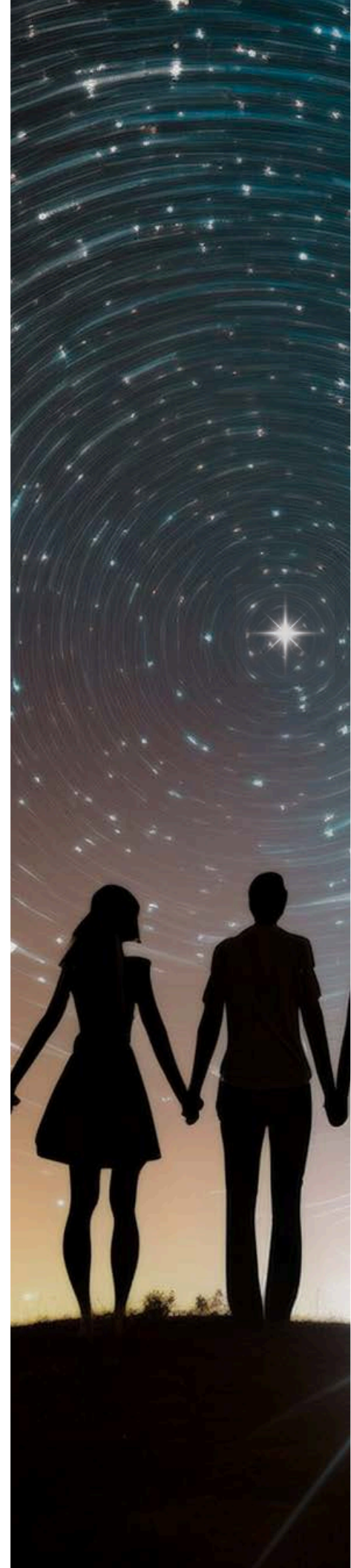
You sense, perhaps quietly, that “knowing” is no longer enough.

- **This circle isn't something to escape.**

It's a solid, meaningful space, but you may feel the whisper of something beyond it. From this foundation, your practice can deepen, expand, and evolve, opening into new dimensions without erasing what you've built.

? ASK YOURSELF:

- **Where am I standing solidly, with mastery and clarity?**
- **And where might the next layer of curiosity, fluidity, or expansion already be calling me?**



2. SIGNATURE EMERGENCE – YOUR UNIQUE FREQUENCY

At some point, you realize: you're no longer just practicing a craft, you're creating a signature.

This stage is about sensing what's uniquely yours, beyond imitation or accumulation of tools.

- **Your sessions carry your fingerprint.**

Clients are drawn to the unique way You hold space, and to the experience they have when working with You.

Your presence, your rhythm, your approach, your subtle way of holding space — that's aslo what magnetizes them.

- **You no longer need external validation to know your work is distinct.**

You feel it in how you show up. You sense it in how your clients respond.

There's a vibration, a tone, a field you bring — quietly, naturally, without pushing.

- **This is the stage where you become magnetic.**

This is where your expression becomes more fully aligned with who you are, without needing to amplify or decorate it.

Your practice stops being just a service and becomes a living expression, an energetic signature that shapes everything you touch.

- **Here, expansion feels inevitable.**

As you step fully into your own frequency, the field around you naturally begins to shift, opening new spaces and possibilities.

Opportunities open. Collaborations invite themselves in. Your work ripples outward, sometimes in ways you didn't plan.

? ASK YOURSELF:

- **Where is your unique vibration already showing up in your work?**
- **What feels unmistakably you — and what might still be waiting to emerge, if you fully allowed it?**



3. TRANSMISSION & EXPANSION – THE QUIET LEADER

You begin to carry something that offers guidance, insight, or inspiration for others — a presence they can learn from, lean into, or amplify. You start to carry something others can learn from, lean into, or amplify.

- **You hold a role beyond the session.**

Your presence teaches, even when you're not formally teaching.

Colleagues, clients, peers — they notice how you move, how you hold, how you think.

You become a reference point, a quiet guide.

- **Transmission is not about teaching technique.**

It's about embodying a way of being, a posture, a living wisdom that others sense and want to understand.

You might take on roles as a mentor, trainer, or speaker — or you might simply notice that your presence shapes systems, teams, communities.

- **This expansion brings a new kind of responsibility.**

When your influence extends beyond what you can directly track, it calls for a deeper clarity and humility.

You're no longer just shaping individual sessions; you're shaping narratives, communities, and the silent standards others may adopt.

Staying aligned, discerning, and authentic becomes essential — because your presence carries weight, even where you cannot see it.

- **You become part of something larger.**

At this stage, your work no longer lives in isolation.

Every insight you share, every approach you refine, every ethical choice you embody becomes part of a broader ecosystem — shaping how your field evolves, how colleagues exchange, how communities grow.

You go beyond serving individual clients; you are participating in the ongoing refinement of your profession, carrying forward its best practices, questioning its limits, and helping define its future. Become a living reference.

It's time to step into your place as an active participant in a living, evolving network of transformation. And to contribute, to amplify, and co-create.

? ASK YOURSELF:

- Where might transmission already be alive in your work — even if you haven't named it yet?
- What kind of guide, mentor, or amplifier are you becoming, quietly, naturally?



03

WHEN SKILL ASKS FOR MEANING

One day you may notice that mastery naturally opens toward meaning.

It starts calling for something bigger. Something that needs to be spread beyond the first idea you'd have of it.

You've mastered the tools. You've refined your presence. You should know how to navigate complexity, hold space and guide transformation.

But are you aware that competence can create its own paradox?

When the hands know, the heart may begin to want more.

Within this competence, something subtle can begin to unfold, like a quiet curiosity, an impulse to explore what lies beneath the surface of the work.

The movements you know so well invite new questions. Familiar gestures begin to carry a deeper resonance. And within you, something leans forward, sensing that the path ahead is shaped less by doing, and more by being.

You are invited to notice the undercurrent beneath your work.

Where does meaning live in your practice now? What are you nourishing? What's nourish you back?

The next layer of your journey doesn't demand more effort. It calls for deeper alignment. And it begins right here, where skill meets soul.



THE PARADOX OF COMPETENCE

Mastery brings confidence and ease, yet it also unlocks a surprising question—a quiet paradox that every seasoned practitioner eventually encounters.



THE THREE PHASES OF LEARNING

Every practitioner progresses through three natural phases of learning: **Observation, Reproduction, and Integration.** These phases are essential for building the foundation of mastery.

1. **Observation:** The practitioner **absorbs knowledge** by watching, listening, and studying others. This phase is marked by curiosity and an outward focus.
2. **Reproduction:** The practitioner begins to apply what they've learned, following scripts and models with precision. This stage is about **building confidence** through repetition and accuracy.
3. **Integration:** Over time, the practitioner embodies their craft. **Skills become second nature**, and the work flows naturally. This is the phase where mastery begins to take shape, and the practitioner feels at ease in their practice.

WHEN INTEGRATION OPENS NEW DOORS

The integration phase is a **significant milestone**, but it can also become a **comfort zone**.

When the practitioner reaches a stage where their skills feel effortless, they may sense a subtle shift—a **pull toward something deeper**.

This is where the **paradox of competence** arises.

Mastery creates mental and emotional space. The energy once spent on precision and execution is now free, allowing new questions and desires to surface:

- How does this work reflect who I am becoming?
- What impact do I want to create beyond technical success?
- What new dimensions of my practice are waiting to be explored?

This shift is not a sign of dissatisfaction—it's a **sign of evolution**. The integration phase, while comfortable, is not the endpoint. **It's a threshold for transformation.**

The integration phase represents the culmination of learning—where everything feels fluid and natural. However, it is also the point where a new question begins to emerge: **What's next?**

THE PARADOX OF COMPETENCE

The paradox emerges when skill alone no longer feels complete. The practitioner, now secure in their craft, begins to feel a pull toward meaning, alignment, and innovation.

This is the moment when skill asks for meaning.

Key signs of the paradox include:

- A growing desire to experiment or innovate, even without a clear reason.
- Intuitions or ideas that extend beyond the formal frameworks of training.
- Less fulfillment in technical success alone and more curiosity about deeper questions of purpose.
- A natural pull toward creating something uniquely theirs—a rhythm, tone, or approach that reflects their identity.

This paradox signals a readiness to move beyond the comfort zone of integration and explore the broader impact of their work.



REFLECTION AND ACTION

Navigating this stage is not about forcing change but about noticing where growth is already happening.

Things you can do :

- **Identify Where you Are:** Reflect on whether they are in the observation, reproduction, or integration phase.
- **Recognize Emerging Impulses:** Pay attention to moments of intuition, curiosity, or experimentation.
- **Explore Without Pressure:** Allow space for creativity and innovation to unfold naturally.
- **Align with Meaning:** Reflect on how their practice can evolve to reflect their values, vision, and unique voice.

KEY TAKEAWAY

The integration phase is both an achievement and a doorway. It creates the foundation for the paradox of competence, where mastery begins to ask for meaning. Recognizing this shift allows you to align your work with their evolving identity, opening the door to deeper purpose and contribution.

THE LIMIT OF TRADITIONAL MODELS

The frameworks, schools, and systems that shaped your foundation provided structure, confidence, and a clear roadmap when you were starting out.

These models taught you the “how,” offering tools to navigate the complexity of your work. However, as you mature in your practice, you may begin to sense their limits.

Traditional approaches often feel linear, designed to provide clarity and consistency during the early stages of learning. They focus on frameworks and techniques that help you build confidence and precision.

Yet, as your skills evolve, the same structures that once guided you can start to feel restrictive. You may notice that the fluidity and intuition you’ve developed don’t always fit neatly within these models.

This stage invites you to reflect on the tools you’ve gained and how they serve you now.

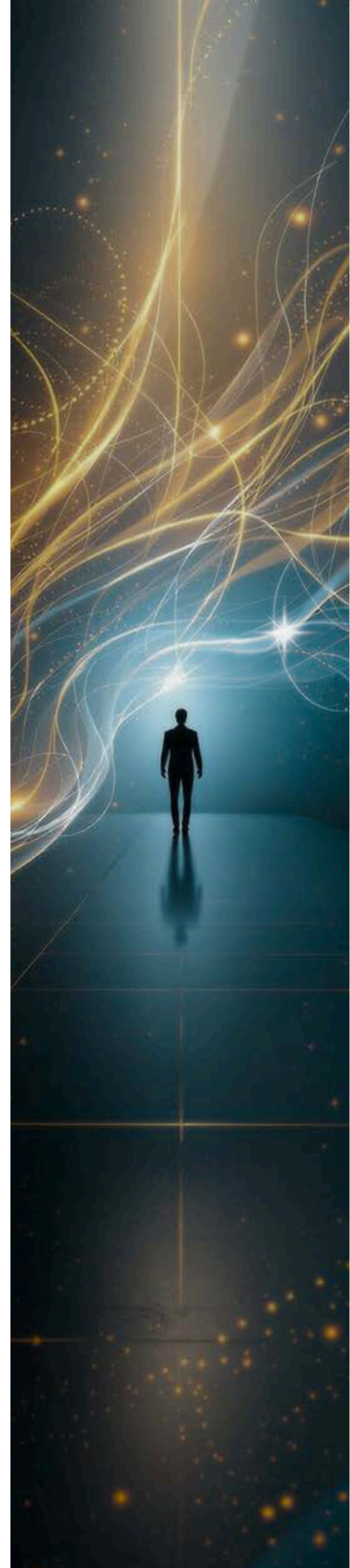
Growth comes from valuing the tools and systems that helped you while allowing space for evolution.

? ASK YOURSELF:

- Which elements of your training still feel relevant and supportive?
- Where do you feel the urge to innovate or adapt?
- How can your work reflect both the foundation you’ve built and the practitioner you are becoming?

Recognizing the limits of traditional models is a natural part of your growth.

It’s an opportunity to step into a practice that reflects not just what you’ve been taught, but the unique perspective you bring to your work.



THE EMERGENCE OF A NEW IDENTITY

As you navigate the limits of traditional models, something deeper begins to emerge—a quiet but persistent urge to innovate, initiate, or transcend the expected path.

This is the point where your work begins to shift from **mastering techniques to expressing your unique vision**.

You may notice a pull toward creating something new, whether it's a method, a system, or a contribution that extends beyond individual sessions.

This shift signals **the emergence of a new identity**, where your focus expands from being a practitioner to becoming a presence that shapes the field itself.

This stage is a progression of your practice, amplifying its impact and influence.

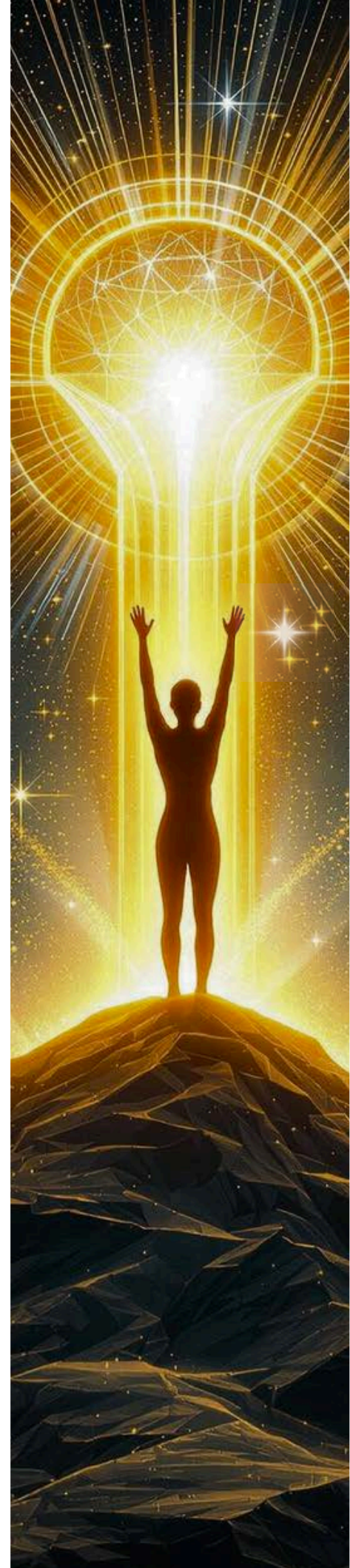
You start to take conscience of moments where your **creativity and leadership becomes naturally perceptible**, when your voice, rhythm, or approach feels uniquely yours.

These are **the seeds of your next contribution**, an opportunity to align your work with the values and vision that matter most to you.

? REFLECT ON:

- What new ideas or impulses are quietly surfacing in your work?
- How can you lean into the parts of your practice that feel most alive and authentic?
- What legacy or impact do you want to create beyond the sessions you deliver?

This is the moment to trust the evolution of your practice. Your presence becomes more than the sum of your skills, it becomes a source of inspiration, leadership, and transformation for others.



04

STEPPING INTO EXPANSION

Expansion begins when the familiar no longer feels sufficient, and curiosity starts to take its place. Rather than rushing toward answers, allow yourself to create enough space to ask the kinds of questions that open new dimensions of growth. Take the time you need to invite exploration, alignment, and creativity.

At this stage, growth isn't defined by external markers like scale or speed. It's a personal process that takes many forms:

- Deepening your connection to your craft,
- Refining your methods,
- or discovering untapped ideas waiting to emerge.

Expansion should not be limited to doing more. It means uncovering the meaning and depth behind what you already do.

Subtle shifts often signal readiness for this stage : a desire for richer conversations, the sense that your work holds something larger waiting to emerge or The awareness that you are moving more towards collaboration for greater.

These moments are not random and they only reflect the opening of a new chapter, one that asks you to pause, reflect, and listen to what's unfolding.

They invite you to pause and listen to what is quietly unfolding, offering you the chance to align your practice with the deeper questions shaping your journey.

WHEN EVOLUTION OPEN DOORS

Growth doesn't have to follow a rigid path. You are not required to pivot your business or redefine your goals to evolve. Exploration is enough. Expansion begins with allowing yourself to ask, "What feels aligned for me now?"

DEEPENING MASTERY

For some, expansion means diving deeper into their craft and exploring advanced techniques, refining their methods, and uncovering subtleties that elevate their impact.

This path considers mastery as a continual process of learning and growth.

It's a commitment to the art and science of hypnosis, where each layer of knowledge reveals new possibilities for transformation.

BECOMING A GUIDE

For many, expansion takes the form of knowledge transmission, sharing what they have learned with others and helping them grow.

Teaching goes beyond delivering information; it's inspiring transformation. Here there is the opportunity to pass on experience, nurture the next generation of practitioners, and see their impact ripple outward through the lives of others.

PIONEERING NEW DIRECTIONS

Others feel drawn toward innovation, exploring uncharted territory, experimenting with new approaches, or integrating hypnosis with other disciplines. This might mean developing unique methodologies, designing tools that reflect their personal philosophy, or creating systems that redefine how hypnosis is practiced.

Expansion here is about creativity and bold exploration, shaping the future of the field.

Teaching hypnosis allows seasoned practitioners to step into a new role, one of leadership and mentorship. It's a way to distill years of experience into tools and insights that others can use to create meaningful change. For those who feel the pull toward teaching, it's a natural progression towards a chance to amplify their legacy by empowering others.

6 SIGNS YOU'RE READY FOR SOMETHING MORE

Expansion often begins when everything feels settled—perhaps too settled. Your practice is running smoothly, your methods are effective, and the results are consistent. Yet, amidst this calm, there's a quiet restlessness. While you can think seeing dissatisfaction, in reality it's the subtle pull of growth. It's the moment when you realize that mastery is not a destination but a foundation for what comes next.

1. The Routine Feels Too Comfortable

You've reached a point where your practice feels predictable. The processes you once refined now run on autopilot. While this stability reflects your success, it also signals readiness for new challenges. You may find yourself daydreaming, imagining fresh possibilities, or wondering how your work could evolve. This desire for excitement and novelty is a clear sign that your growth is calling for a new direction.

2. A Pull Toward Knowledge Transmission

There's a moment when the knowledge you've accumulated feels too valuable to keep to yourself. You feel the urge to share it, to guide others, to pass on what you've learned. Teaching techniques is something but inspiring others and helping them grow is the goal. The idea of mentoring or training future hypnotherapists feels energizing. Teaching reflects a readiness to amplify your impact beyond individual sessions, shaping the next generation of practitioners.

3. Curiosity About Unexplored Ideas

You may notice an emerging curiosity—questions that extend beyond the framework of your current practice. What else could hypnosis achieve? How could your methods integrate with other disciplines? This curiosity isn't random; it's a signal that your creativity is seeking new outlets. It's a reminder that growth often begins with exploration, with giving yourself permission to test ideas, innovate, and create something uniquely yours.

4. Confidence in Your Mastery

Confidence is a quiet but powerful sign of readiness. You know your methods work, you trust the results you deliver, and you have a clear understanding of your strengths. This confidence creates the stability needed to step into new opportunities, whether that means creating a signature program, designing a new methodology, or mentoring others.

5. A Desire to Align with Meaning

Expansion often comes with a deeper need for alignment. You may start reflecting on whether your work fully embodies your values and vision. We are talking here about the idea of refining your practice to feel even more authentic and fulfilling. To allow yourself to step into the next natural chapter without crushing done all what you've built . Being aligned and fully aware of that state, you can enter into growth with clarity and purpose

6. Gratitude Paired with Ambition

You feel deeply grateful for everything you've achieved, but you also recognize that this is not the end (fortunately). Gratitude and ambition can coexist. One acknowledges the foundation you've built, and the other invites you to imagine what's next. This balance is what makes expansion sustainable. You are not going to abandon what you've created, you are about to use it as a leverage point for the next level.

These signs are not demands for immediate action. They are invitations to explore, to dream, and to ask the kinds of questions that open new doors. Whether it's teaching, innovating, or deepening your craft, these moments remind you that growth is not a finality; it's a continuous unfolding of what's possible.